

Name _____

Score _____

Date _____

Class _____

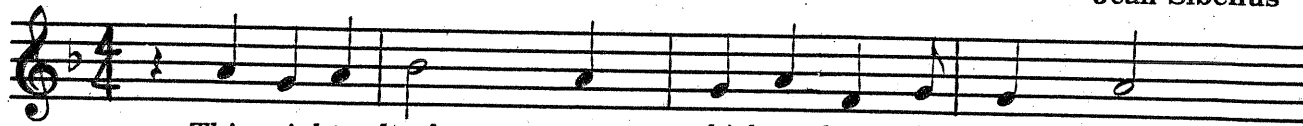
THE CASE OF THE MISSING DOTS

1-30

In this song the dots from all the dotted notes have been left out. A DOT increases the value of a note by one-half. A dot may be added to any kind of note to increase its value. A dot is added to the right of the note head. For example, $\text{d.} = 3 \text{ counts} = (\text{d} + \text{d})$. Listen to someone play or sing the song, or listen to a recording to hear the correct rhythm. Then add the dots after the right notes.

Finlandia

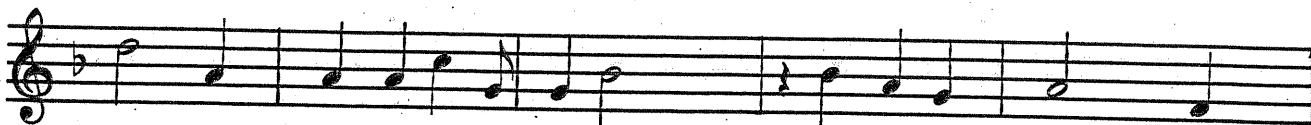
Jean Sibelius



This might-y land, on which we built our na - tion



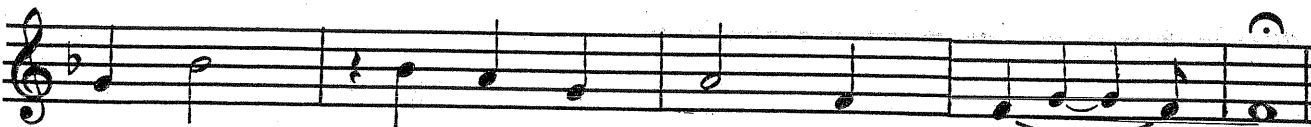
Lent us by God, on which to make a start, We will en -



dure what ev - er must be done with, And we will nev - er



lose heart let hills and plains re- sound the hea -vy



cho -rus that we will nev - er lose heart