

Name: \_\_\_\_\_

## Meter Signature

**Meter signature (also called time signature) is:**

the \_\_\_\_\_ numbers at the \_\_\_\_\_ of a song that shows how many beats and in a \_\_\_\_\_ and what type of note \_\_\_\_\_ the steady beat.

**OR**

the number of beats in every measure

---

the note that represents the steady beat

**OR**

How many?

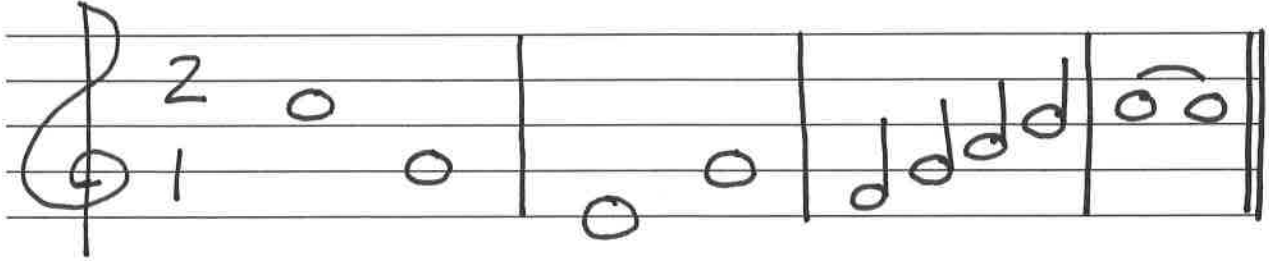
---

Which note?

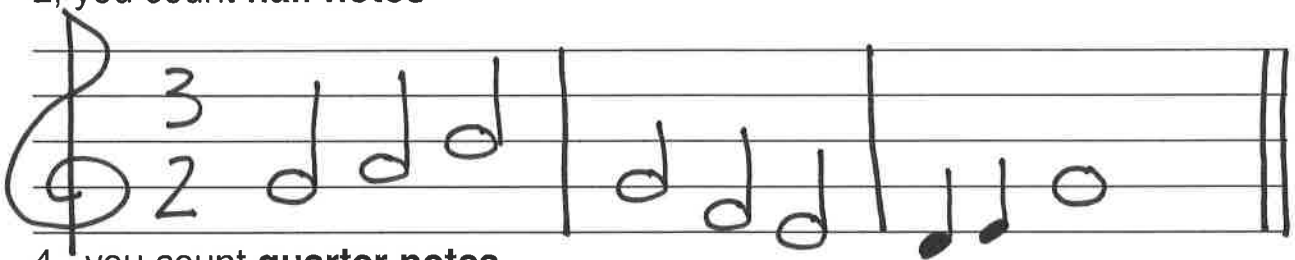
Name: \_\_\_\_\_

The bottom number in the meter signature represents a **specific** note. If the bottom number is a:

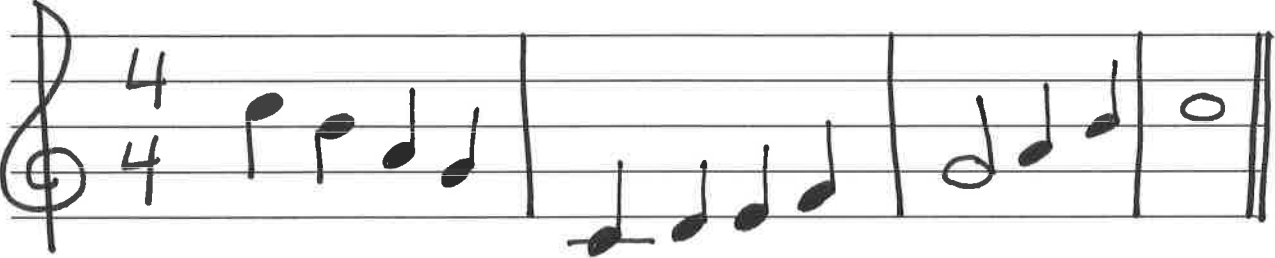
1, you count **whole notes**



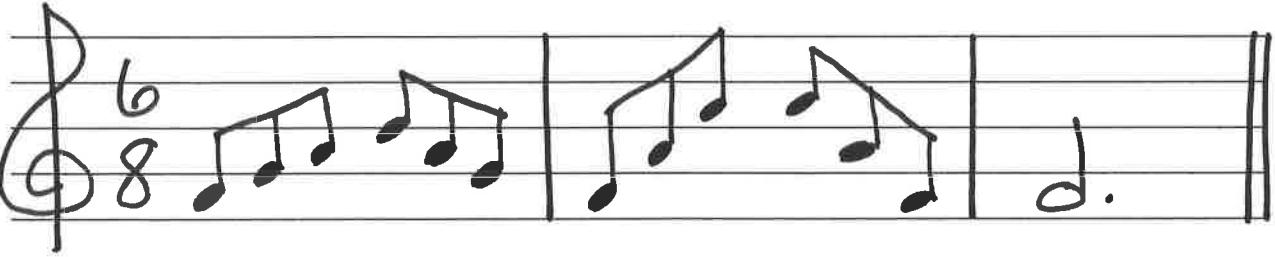
2, you count **half notes**



4, you count **quarter notes**



8, you count **eighth notes**



16, you count **sixteenth notes**

